

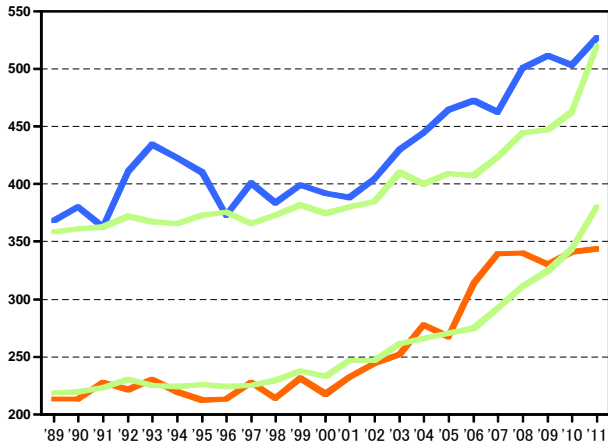
昭和60年モデル人口による 年齢調整罹患率および年齢調整死亡率の推移

罹患率(人口10万対)

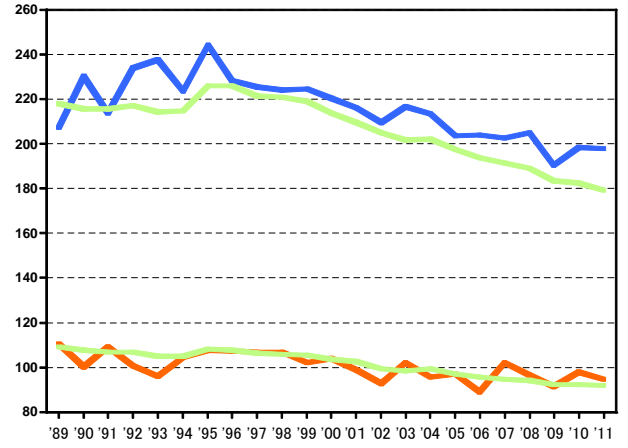
死亡率(人口10万対)

全部位

全部位

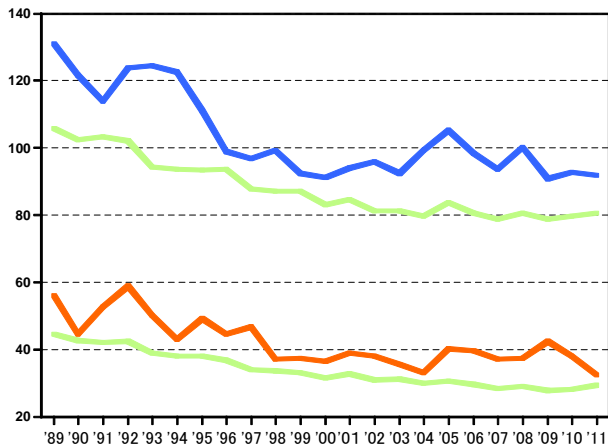


- 男・鳥取
- 男・全国
- 女・鳥取
- 女・全国

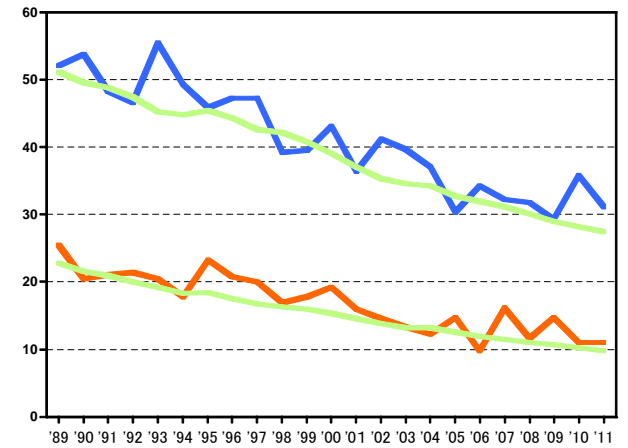


胃

胃

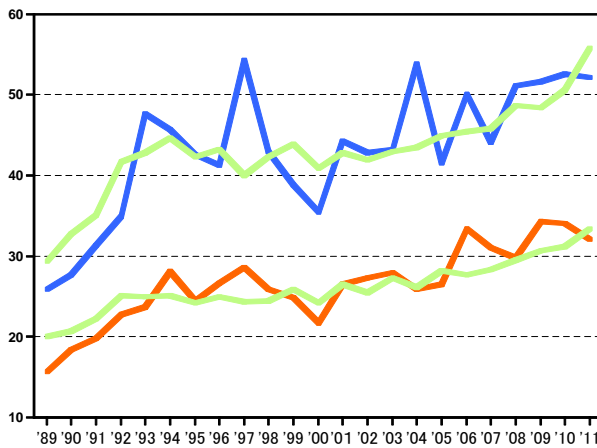


- 男・鳥取
- 男・全国
- 女・鳥取
- 女・全国

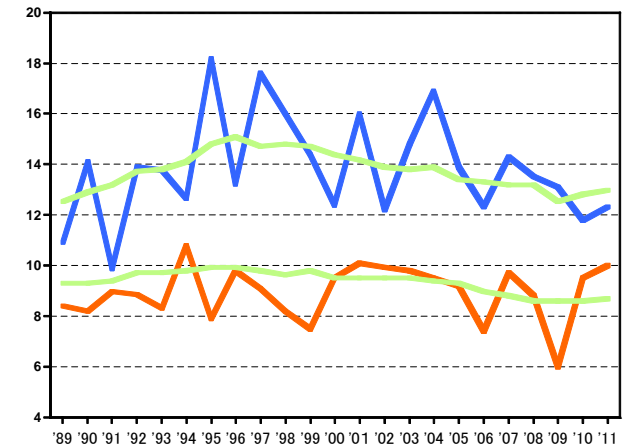


結腸

結腸

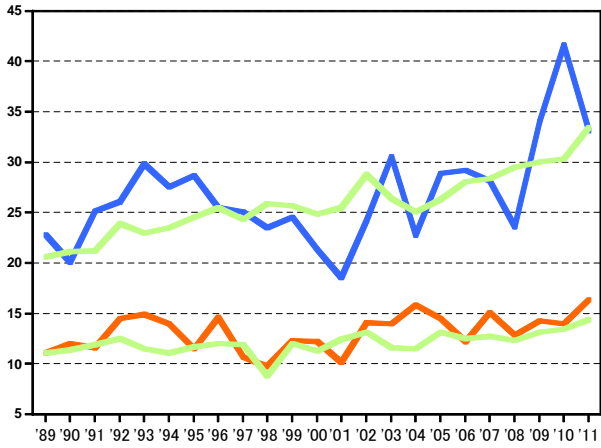


- 男・鳥取
- 男・全国
- 女・鳥取
- 女・全国



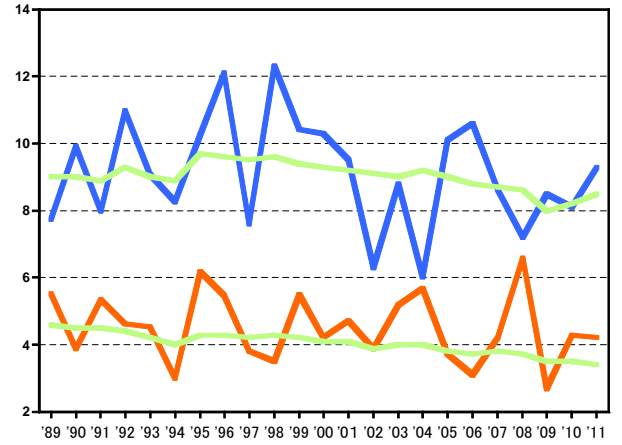
罹患率(人口10万対)

直腸

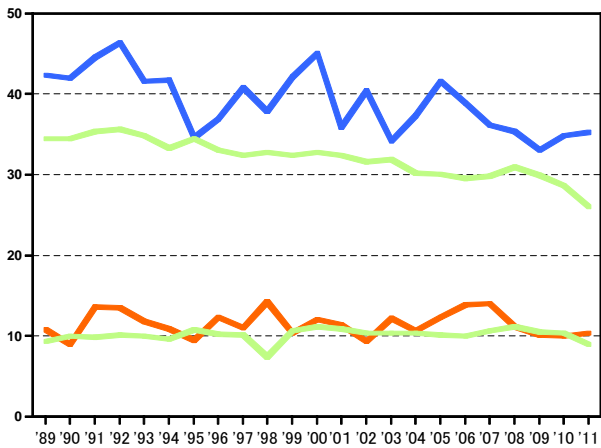


死亡率(人口10万対)

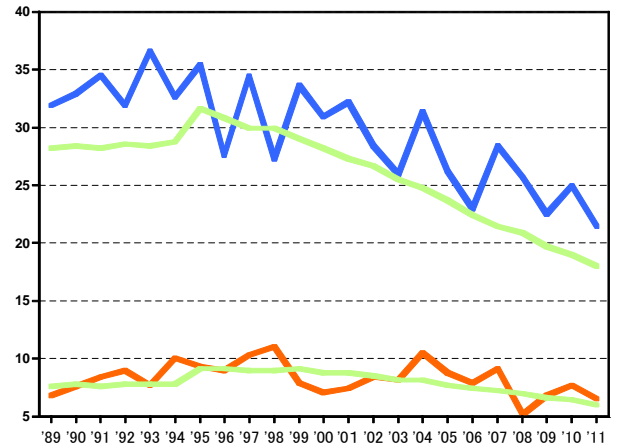
直腸



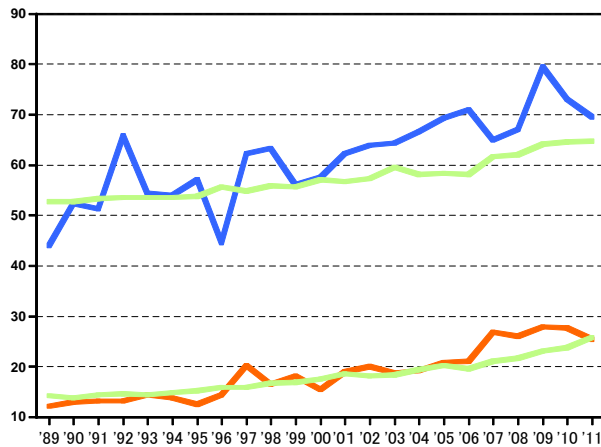
肝臓



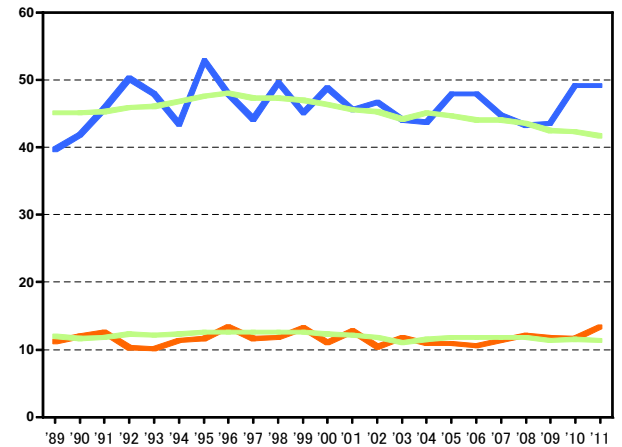
肝臓



肺

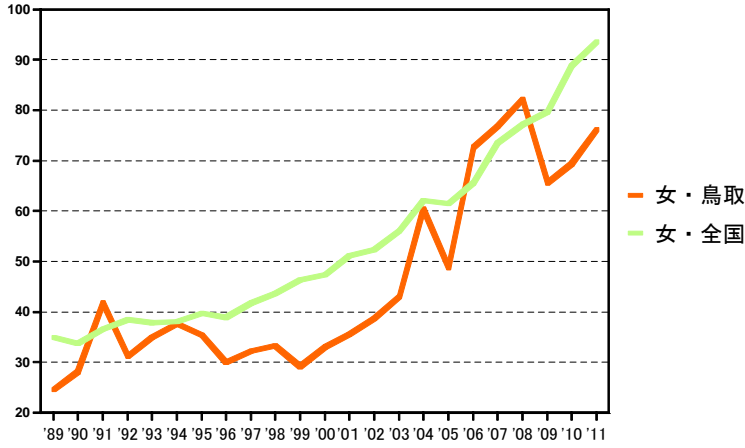


肺



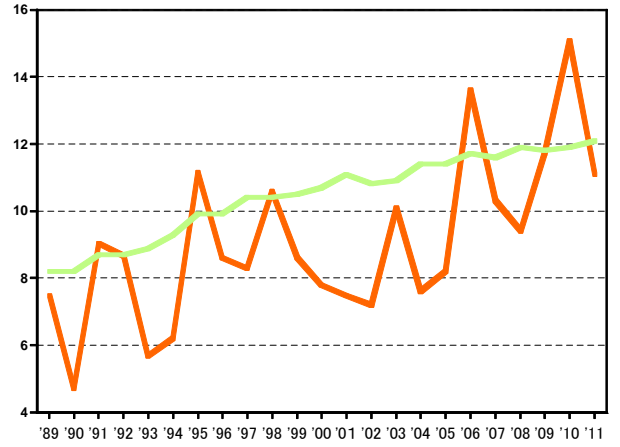
罹患率(人口10万対)

乳房

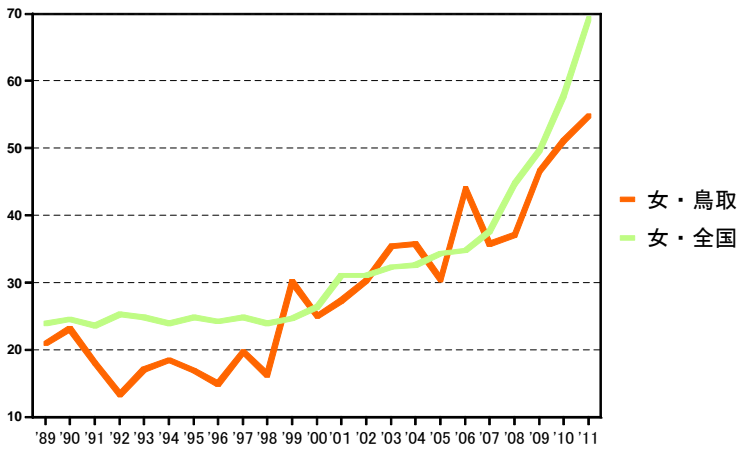


死亡率(人口10万対)

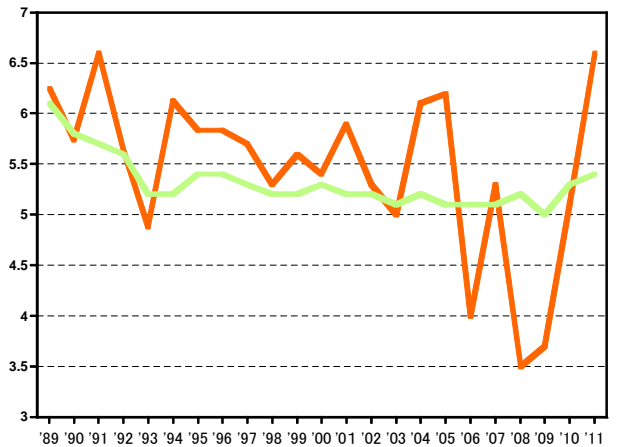
乳房



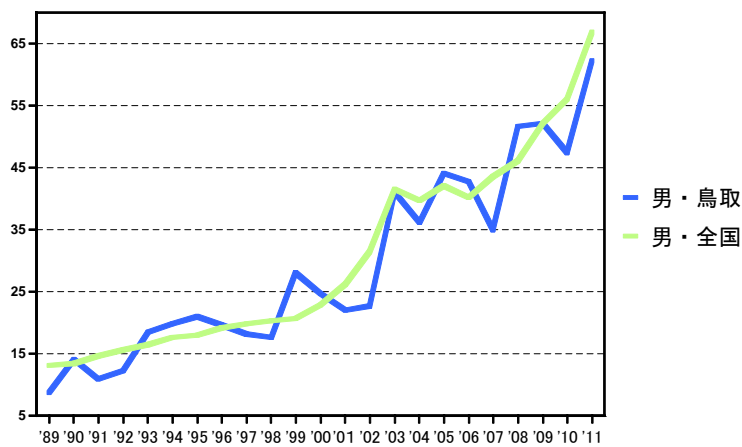
子宮



子宮



前立腺



前立腺

